

PROJECT 4 - ALL-SEASON ROAD CONNECTING BERENS RIVER TO POPLAR RIVER FIRST NATION

ENVIRONMENTAL IMPACT STATEMENT

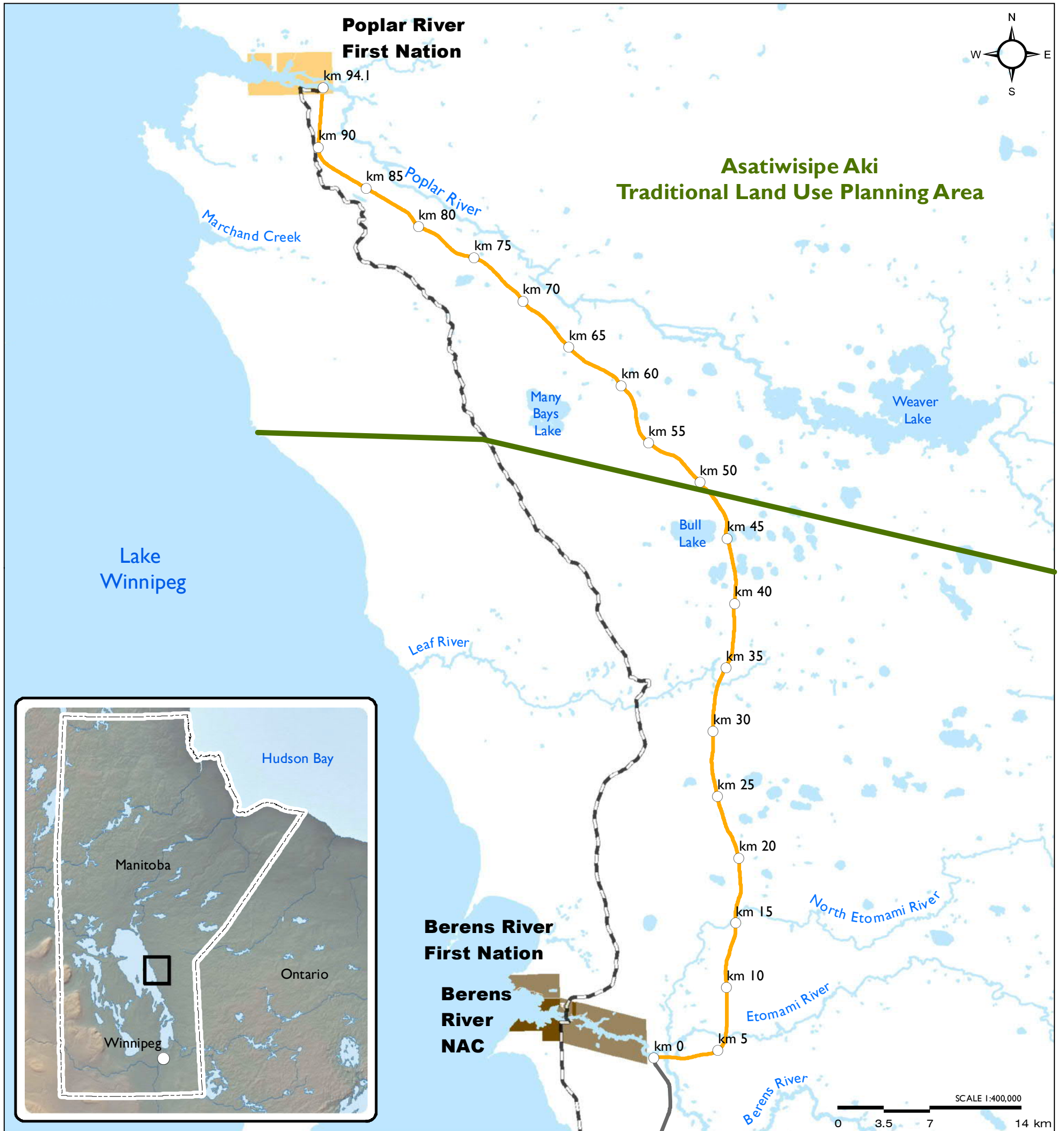
Compendium of Maps

April 2016

Submitted to:
Canadian Environmental Assessment Agency

Submitted by:
Manitoba East Side Road Authority
200-155 Carlton Street
Winnipeg, Manitoba R3C 3H8





Project 4 - All-Season Road Connecting Berens River to Poplar River First Nation

Figure I-1
Proposed P4 All-Season Road Alignment

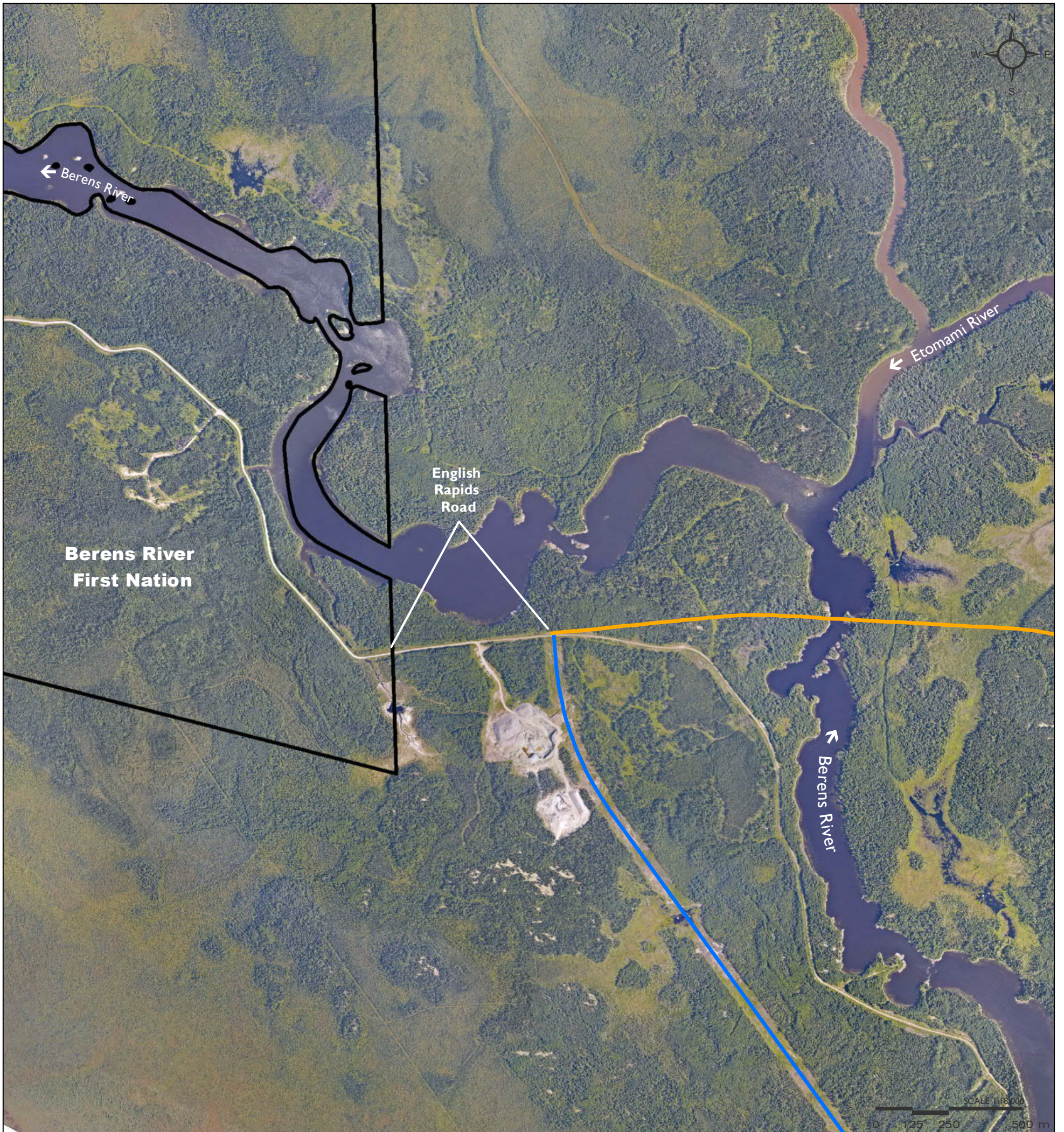
- | | |
|--|--|
| P4 All-Season Road Alignment (April 2015) | Asatiwisipe Aki Traditional Land Use Planning Area |
| 5 km Station | Berens River First Nation Reserve |
| PI All-Season Road (South of Berens to PTH 304) - Under Construction | Poplar River First Nation Reserve |
| 2013/2014 Manitoba Winter Road | Berens River Northern Affairs Community |

Map Drawing Information:
ESRI Base Layers, Province of Manitoba, CanVec, GeoGratis, Dillon Consulting Limited

Map Created By: ECH
Map Checked By: MG/PS/DM
Map Projection: NAD 1983 UTM Zone 14N

DATE: 4/8/2016





Project 4 - All-Season Road Connecting Berens River to Poplar River First Nation

Figure I-2

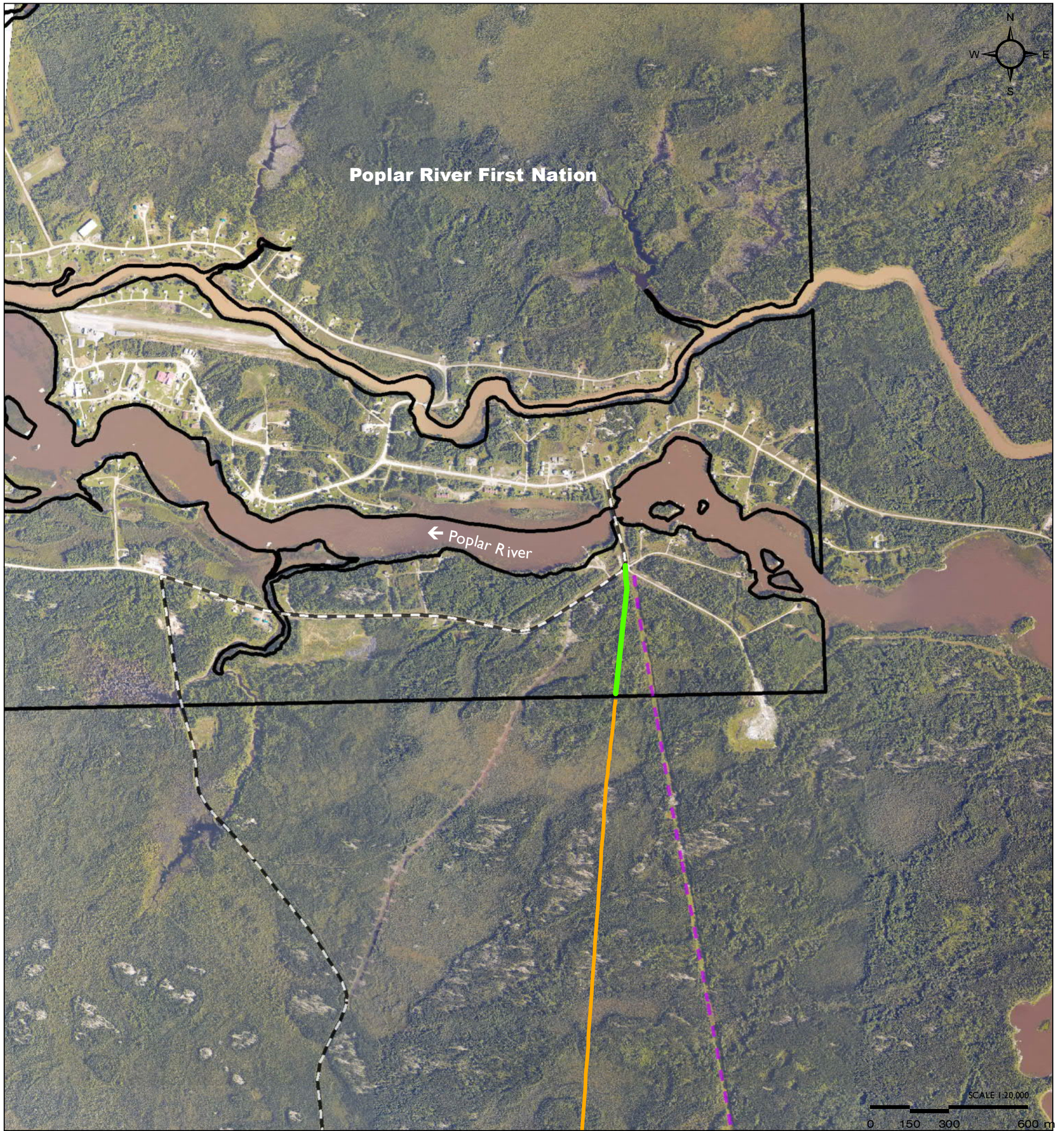
Junction of P1 All-Season Road Alignment at Berens River First Nation

- P4 All-Season Road Alignment
- P1 All-Season Road (South of Berens to PTH 304) - Under Construction
- Berens River First Nation Reserve

Map Drawing Information:
 ESRI Base Layers, Province of
 Manitoba, CanVec, GeoGratis,
 Dillon Consulting Limited

Map Created By: ECH
 Map Checked By: MG/PS/DM
 Map Projection: NAD 1983 UTM Zone 14N

DATE: 4/8/2016



Project 4 - All-Season Road Connecting Berens River to Poplar River First Nation

Figure I-3
Proposed P4 All-Season Road
Terminus at Poplar River First Nation

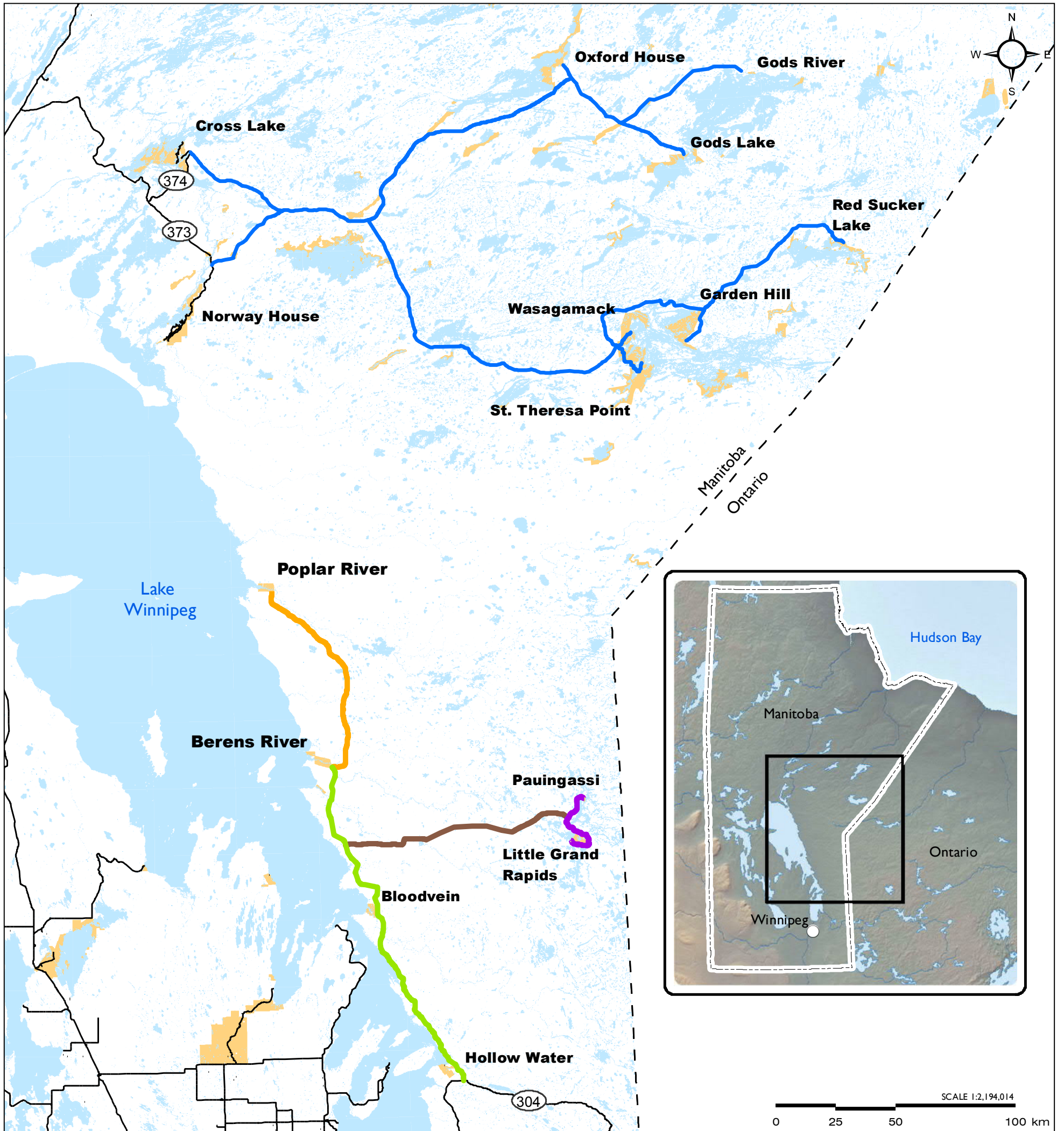
- P4 All-Season Road Alignment
- Proposed Community Access Road on Poplar River 16
- 2013/2014 Manitoba Winter Road
- Existing Transmission Line
- Poplar River First Nation Reserve

Map Drawing Information:
 ESRI Base Layers, Province of
 Manitoba, CanVec, GeoGratis,
 Dillon Consulting Limited

Map Created By: ECH
 Map Checked By: MG/PS/DM
 Map Projection: NAD 1983 UTM Zone 14N

DATE: 4/8/2016





Project 4 - All-Season Road Connecting Berens River to Poplar River First Nation

Figure I-4
Regional Transportation Network of Planned All-Season Roads on the East Side of Lake Winnipeg in the Large Area Transportation Network Study

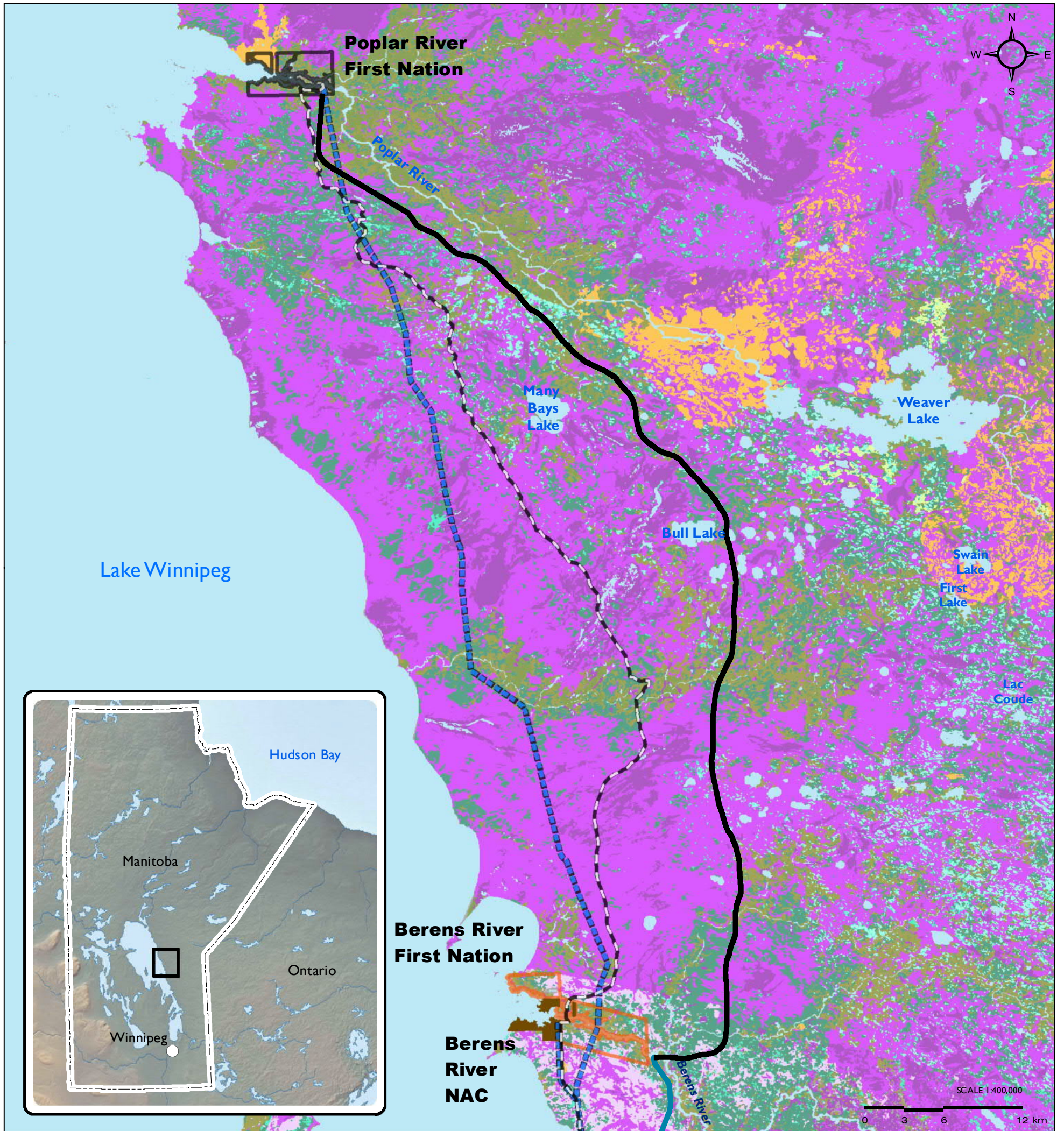
- Proposed P4 All-Season Road
- Potential East-West All-Season Road Network
- Project 1 All-Season Road (Currently Under Construction)
- First Nation Reserve
- Proposed Project 7a All-Season Road
- Proposed Project 7 All-Season Road

Map Drawing Information:
 ESRI Base Layers, Province of Manitoba, CanVec, GeoGratis, Dillon Consulting Limited

Map Created By: ECH
 Map Checked By: MG/PS/DM
 Map Projection: NAD 1983 UTM Zone 14N

DATE: 4/8/2016





Project 4 - All-Season Road Connecting Berens River to Poplar River First Nation

Figure I-5
Land Cover in the Vicinity of the Proposed P4 Project

Proposed P4 All-Season Road Alignment	Berens River First Nation	Broadleaf - Dense	Coniferous - Open	Wetland - Herb
Transmission Line	Poplar River First Nation	Broadleaf - Open	Coniferous - Sparse	Wetland - Shrub
PI All-Season Road (under construction)	Berens River NAC	Broadleaf - Sparse	Mixed Wood - Dense	Wetland - Treed
2013/2014 Manitoba Winter Road	Shrub - Tall	Coniferous - Dense	Mixed Wood - Open	

Map Drawing Information:
ESRI Base Layers, Province of Manitoba, CanVec, GeoGratis, Dillon Consulting Limited

Map Created By: ECH
Map Checked By: MG/PS/DM
Map Projection: NAD 1983 UTM Zone 14N

DATE: 4/8/2016