








Project 4 - All-Season Road Connecting Berens River to Poplar River First Nation

Figure 3-3 Grid I

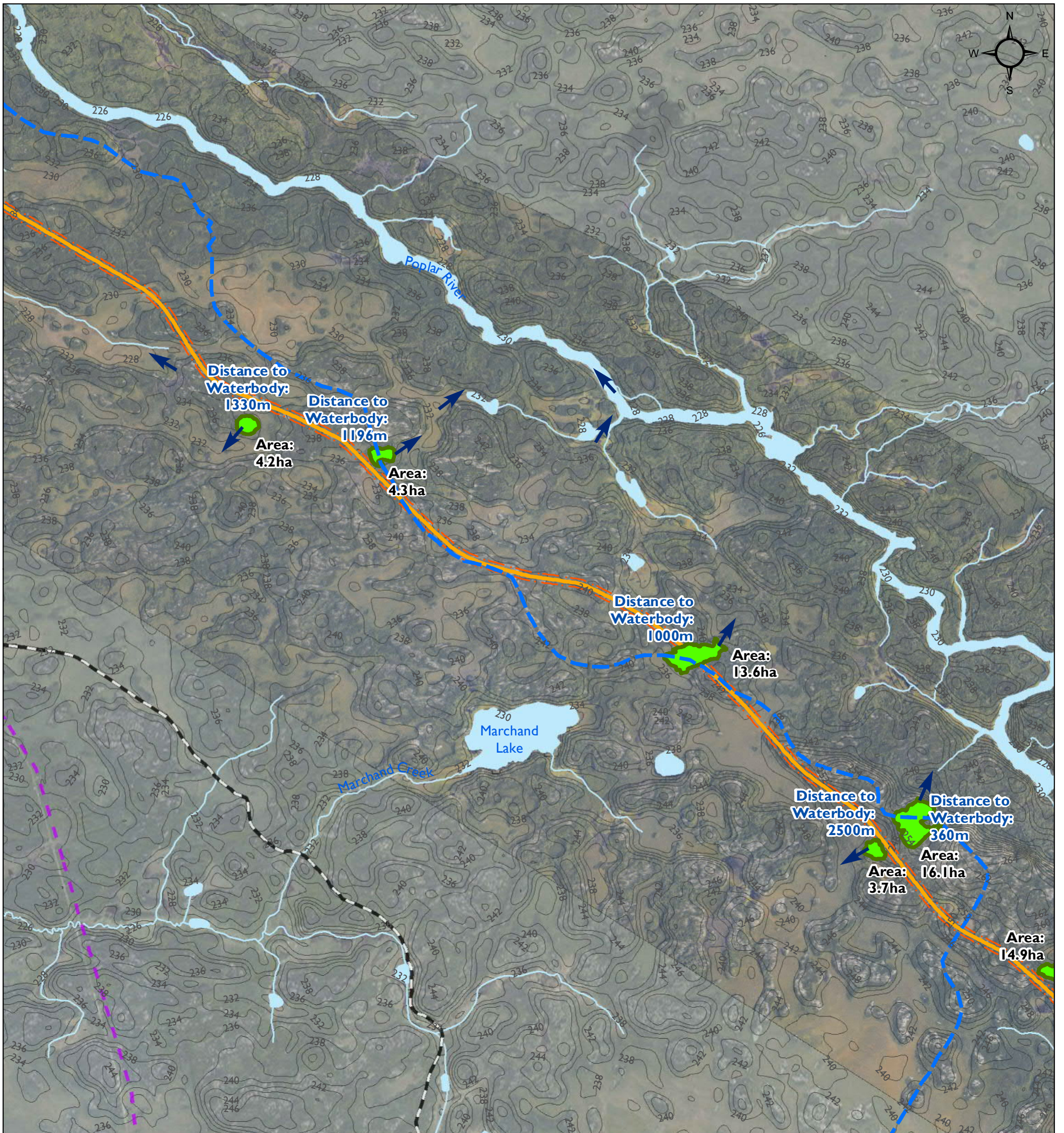
Overview of P4 All-Season Road and Quarries

- |  |   |
|--|---|
|  P4 All-Season Road Alignment   |  Drainage Flow Direction |
|  PI All-Season Road (South of Berens to PTH 304) - Under Construction |  Contours                |
|  2013/2014 Manitoba Winter Road                                       |  Watershed Boundary      |
|  Transmission Line  |   |

Map Drawing Information:  
 ESRI Base Layers, Province of  
 Manitoba, CanVec, GeoGratis,  
 Dillon Consulting Limited  
 Manitoba Mineral Resources 2015d

Map Created By: ECH  
 Map Checked By: MG/PS/LD  
 Map Projection: NAD 1983 UTM Zone 14N

DATE: 12/2/2015



Project 4 - All-Season Road Connecting Berens River to Poplar River First Nation

Figure 3-3 Grid 2

Overview of P4 All-Season Road and Quarries

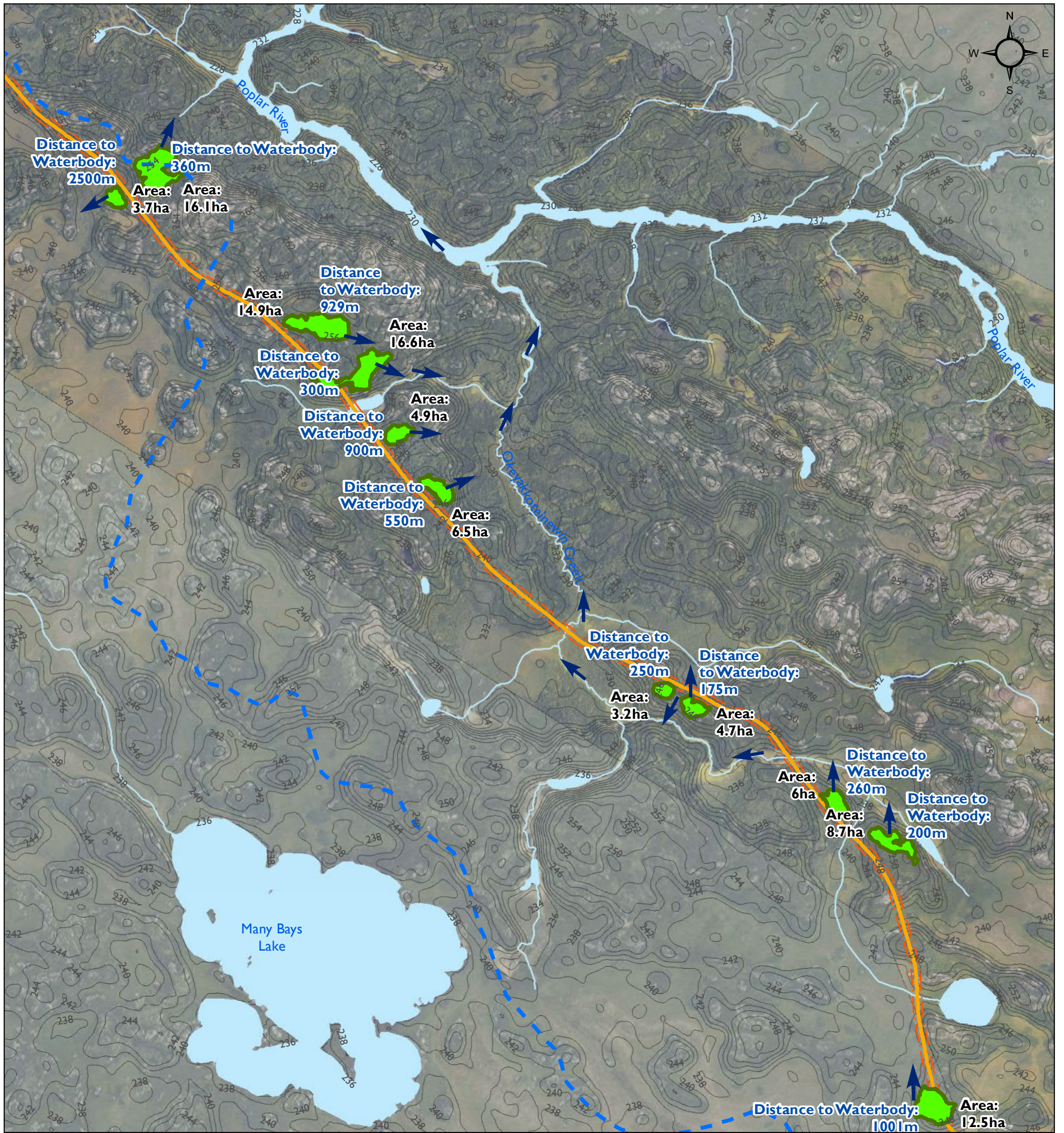
- P4 All-Season Road Alignment
- ➔ Drainage Flow Direction
- PI All-Season Road (South of Berens to PTH 304) - Under Construction
- Contours
- - - 2013/2014 Manitoba Winter Road
- - - Watershed Boundary
- Transmission Line

Map Drawing Information:  
 ESRI Base Layers, Province of Manitoba, CanVec, GeoGratis, Dillon Consulting Limited  
 Manitoba Mineral Resources 2015d

Map Created By: ECH  
 Map Checked By: MG/PS/LD  
 Map Projection: NAD 1983 UTM Zone 14N

DATE: 12/2/2015





Project 4 - All-Season Road Connecting Berens River to Poplar River First Nation

Figure 3-3 Grid 3

Overview of P4 All-Season Road and Quarries

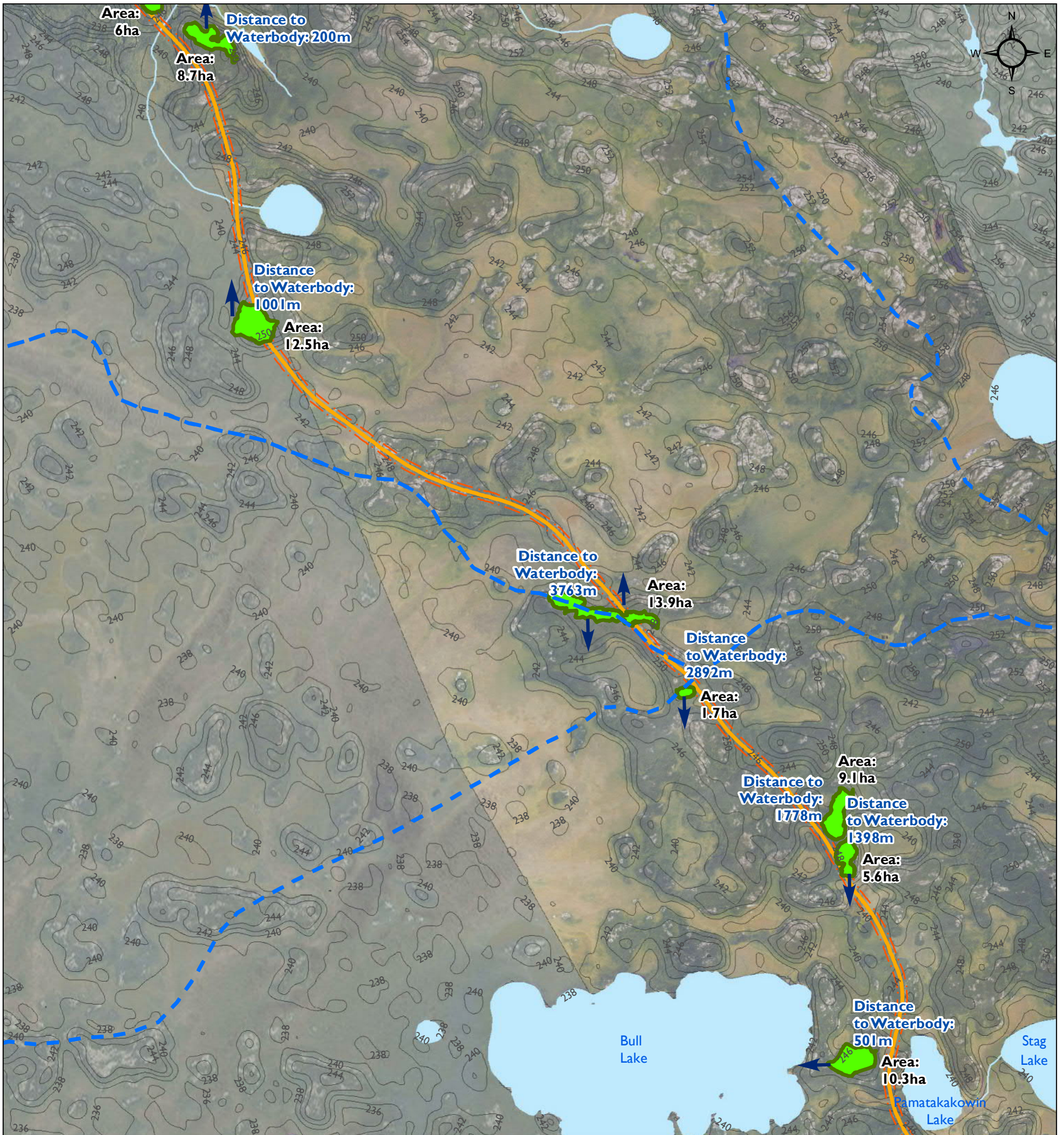
- P4 All-Season Road Alignment
- Drainage Flow Direction
- PI All-Season Road (South of Berens to PTH 304) - Under Construction
- Contours
- 2013/2014 Manitoba Winter Road
- - - Watershed Boundary
- Transmission Line

Map Drawing Information:  
 ESRI Base Layers, Province of Manitoba, CanVec, GeoGratis, Dillon Consulting Limited  
 Manitoba Mineral Resources 2015d

Map Created By: ECH  
 Map Checked By: MG/PS/LD  
 Map Projection: NAD 1983 UTM Zone 14N

DATE: 12/2/2015





Project 4 - All-Season Road Connecting Berens River to Poplar River First Nation

Figure 3-3 Grid 4

Overview of P4 All-Season Road and Quarries

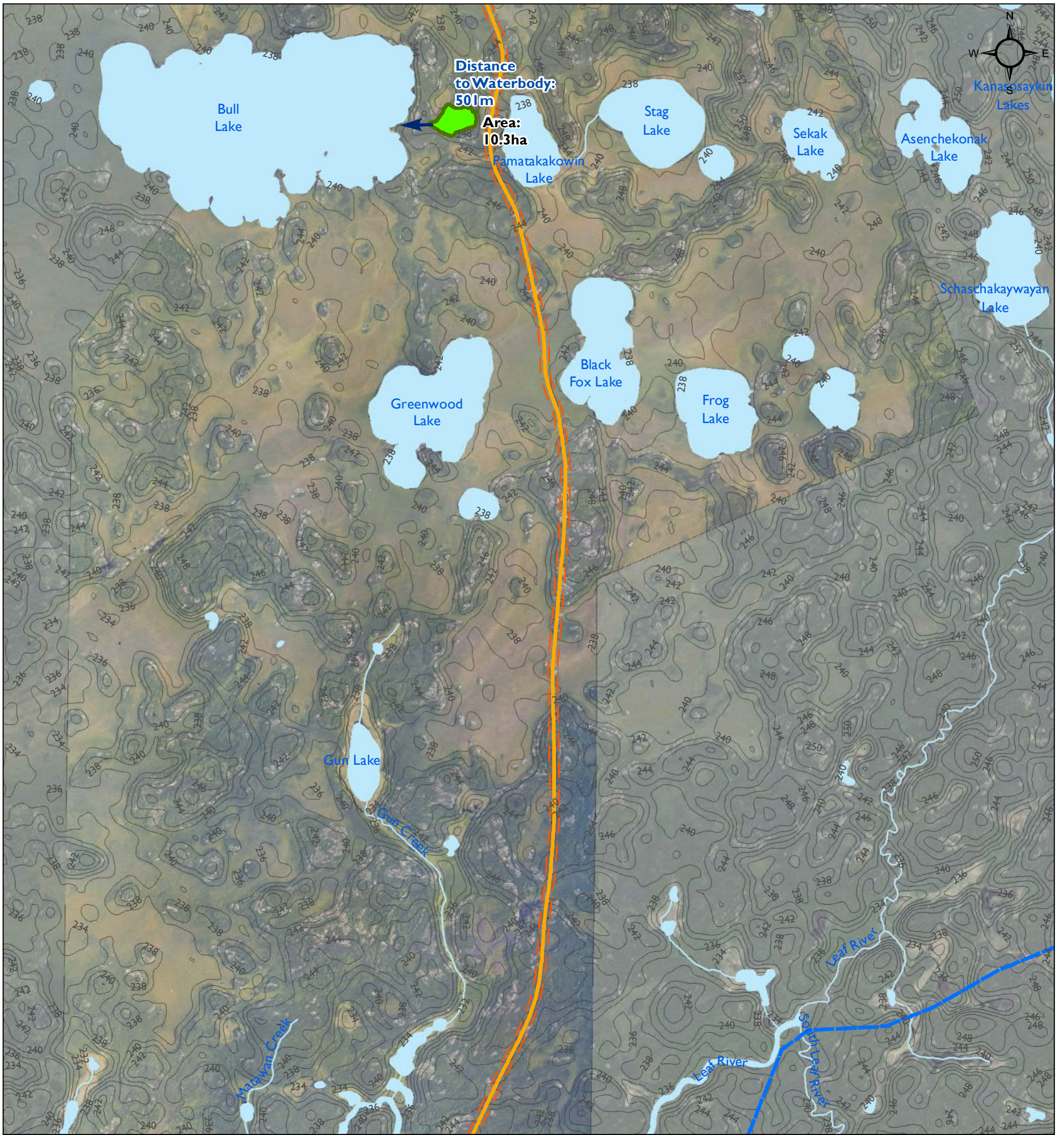
- P4 All-Season Road Alignment
- Drainage Flow Direction
- PI All-Season Road (South of Berens to PTH 304) - Under Construction
- Contours
- 2013/2014 Manitoba Winter Road
- - - Watershed Boundary
- Transmission Line

Map Drawing Information:  
 ESRI Base Layers, Province of Manitoba, CanVec, GeoGratis, Dillon Consulting Limited  
 Manitoba Mineral Resources 2015d

Map Created By: ECH  
 Map Checked By: MG/PS/LD  
 Map Projection: NAD 1983 UTM Zone 14N

DATE: 12/2/2015





Project 4 - All-Season Road Connecting Berens River to Poplar River First Nation

Figure 3-3 Grid 5

Overview of P4 All-Season Road and Quarries

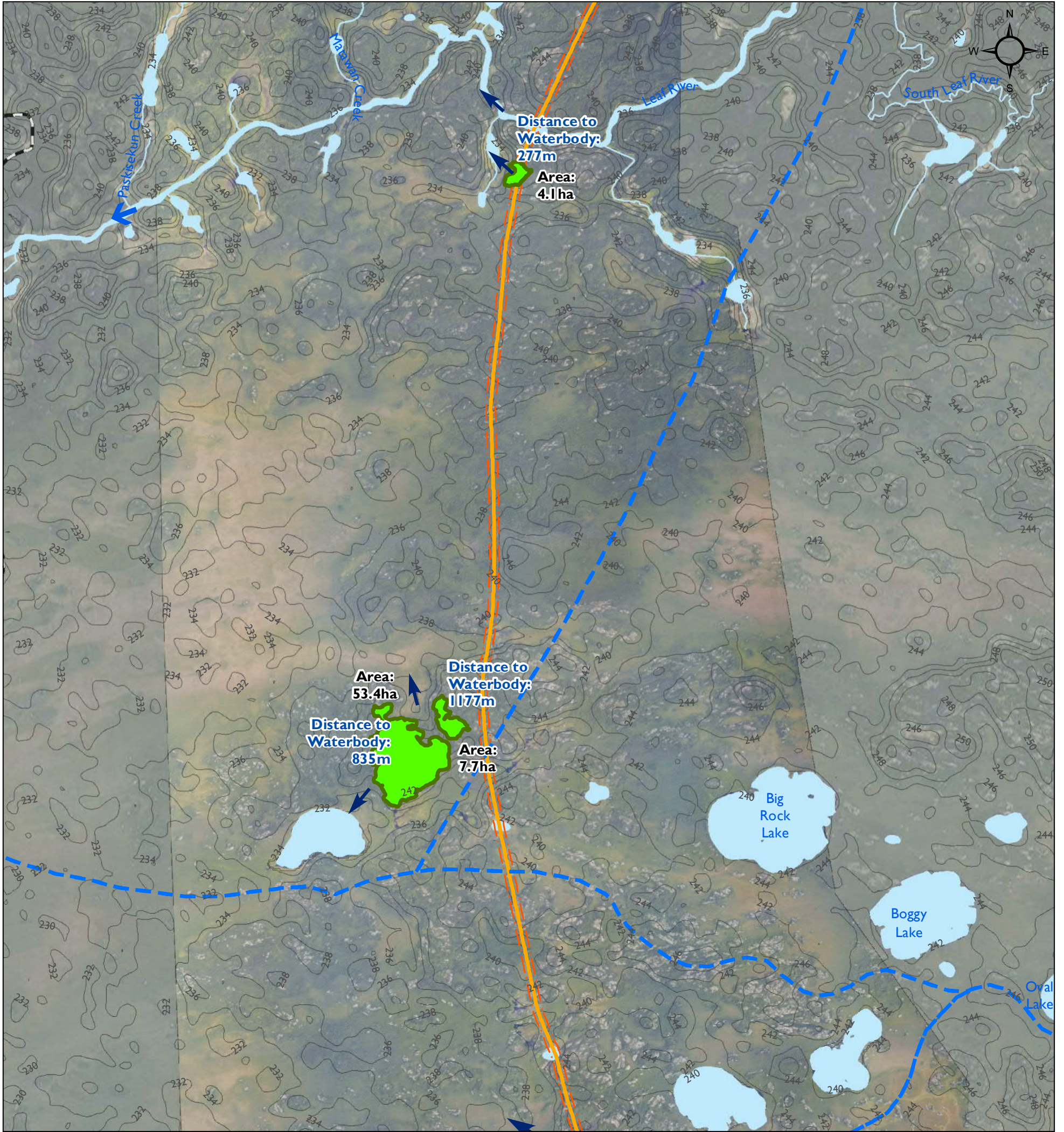
- P4 All-Season Road Alignment
- ➔ Drainage Flow Direction
- PI All-Season Road (South of Berens to PTH 304) - Under Construction
- Contours
- 2013/2014 Manitoba Winter Road
- Watershed Boundary
- Transmission Line

Map Drawing Information:  
 ESRI Base Layers, Province of Manitoba, CanVec, GeoGratis, Dillon Consulting Limited  
 Manitoba Mineral Resources 2015d

Map Created By: ECH  
 Map Checked By: MG/PS/LD  
 Map Projection: NAD 1983 UTM Zone 14N

DATE: 12/2/2015












Project 4 - All-Season Road Connecting Berens River to Poplar River First Nation

Figure 3-3 Grid 6

Overview of P4 All-Season Road and Quarries

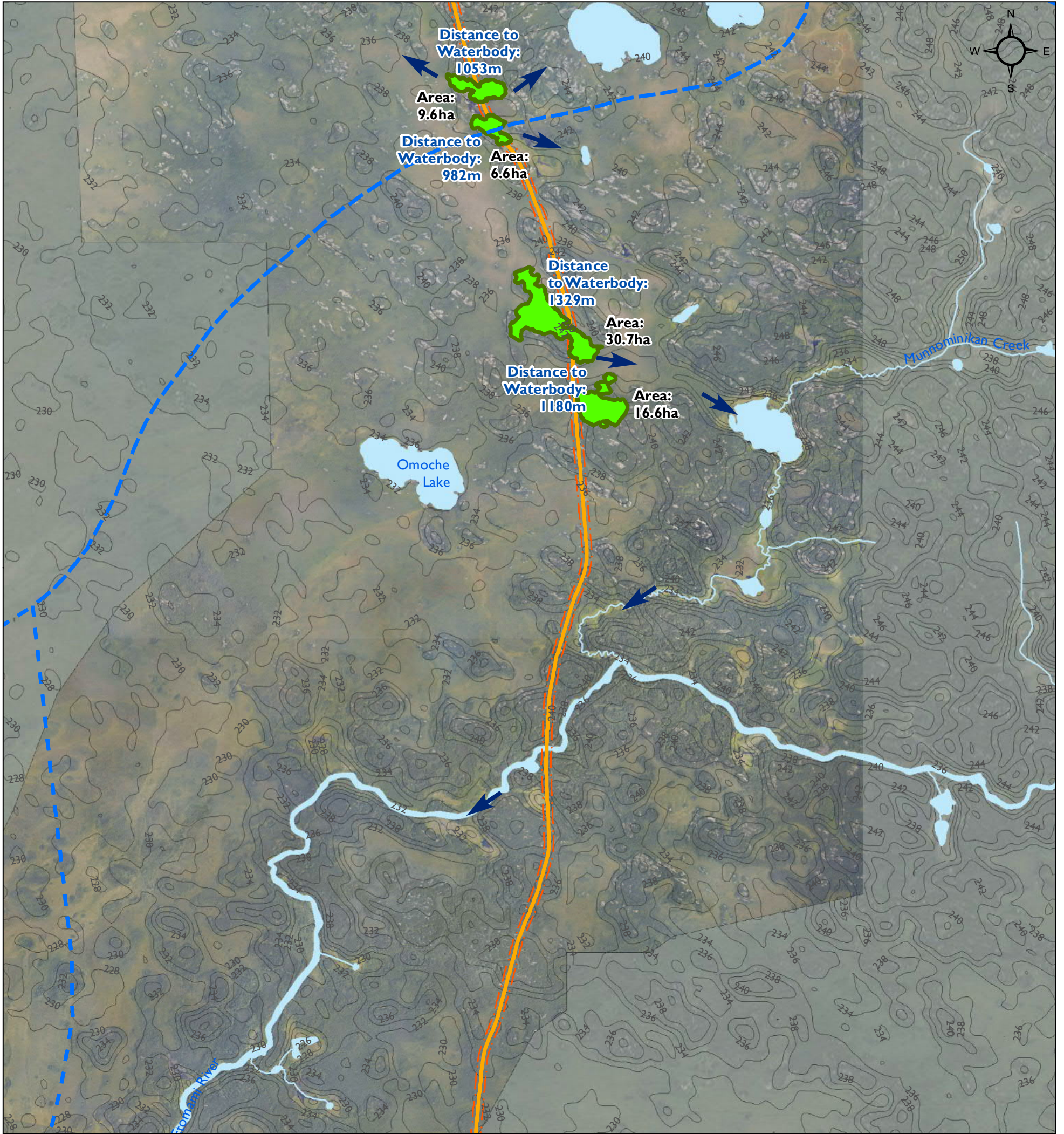
- |  |   |
|--|---|
|  P4 All-Season Road Alignment   |  Drainage Flow Direction |
|  PI All-Season Road (South of Berens to PTH 304) - Under Construction |  Contours                |
|  2013/2014 Manitoba Winter Road                                       |  Watershed Boundary      |
|  Transmission Line  |   |

Map Drawing Information:  
 ESRI Base Layers, Province of Manitoba, CanVec, GeoGratis, Dillon Consulting Limited  
 Manitoba Mineral Resources 2015d

Map Created By: ECH  
 Map Checked By: MG/PS/LD  
 Map Projection: NAD 1983 UTM Zone 14N

DATE: 12/2/2015












Project 4 - All-Season Road Connecting Berens River to Poplar River First Nation

Figure 3-3 Grid 7

Overview of P4 All-Season Road and Quarries

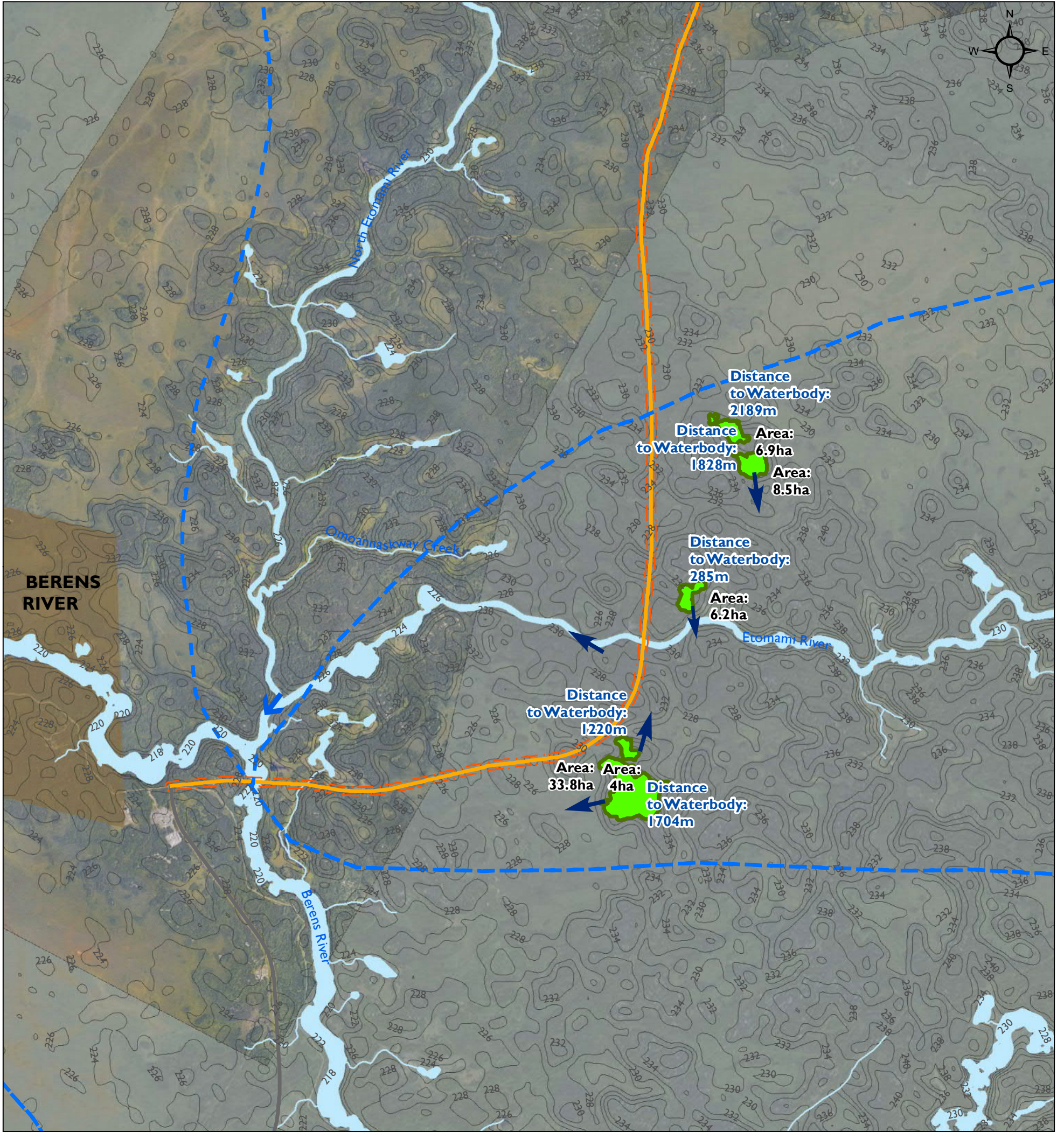
- |  |   |
|--|---|
|  P4 All-Season Road Alignment   |  Drainage Flow Direction |
|  PI All-Season Road (South of Berens to PTH 304) - Under Construction |  Contours                |
|  2013/2014 Manitoba Winter Road                                       |  Watershed Boundary      |
|  Transmission Line  |   |

Map Drawing Information:  
 ESRI Base Layers, Province of  
 Manitoba, CanVec, GeoGratis,  
 Dillon Consulting Limited  
 Manitoba Mineral Resources 2015d

Map Created By: ECH  
 Map Checked By: MG/PS/LD  
 Map Projection: NAD 1983 UTM Zone 14N

DATE: 12/2/2015





Project 4 - All-Season Road Connecting Berens River to Poplar River First Nation

Figure 3-3 Grid 8

Overview of P4 All-Season Road and Quarries

- P4 All-Season Road Alignment
- Drainage Flow Direction
- PI All-Season Road (South of Berens to PTH 304) - Under Construction
- Contours
- 2013/2014 Manitoba Winter Road
- - - Watershed Boundary
- Transmission Line

Map Drawing Information:  
 ESRI Base Layers, Province of Manitoba, CanVec, GeoGratis, Dillon Consulting Limited  
 Manitoba Mineral Resources 2015d

Map Created By: ECH  
 Map Checked By: MG/PS/LD  
 Map Projection: NAD 1983 UTM Zone 14N

DATE: 12/2/2015

